

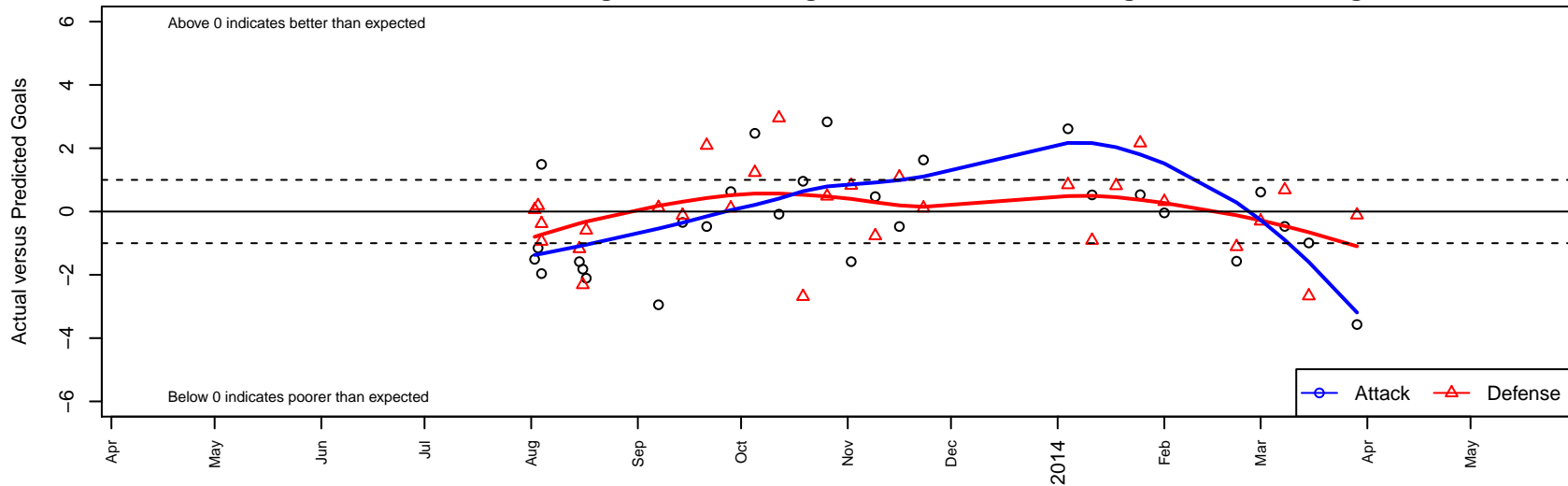
Seattle United NE Blue B02

Seattle United Regional
 Seattle, WA
 B02 total strength=466
 attack=0.5 defense=0.2
 fall league = NPSL B11D1, NPSL Spr B11D1
 alt names used:
 Seattle United NE B02 Blue
 SU NE B02 BLUE ()
 2013 Seattle United NE B02 Blue

Venues played:
 Marysville Strawberry Classic BU11 Group 2
 Bigfoot Silver U11
 NPSL B11D1
 Founders Cup B02
 NPSL Spr B11D1



Seattle United NE Blue B02
 Dots are actual minus expected GF (blue circles) and GA (red triangles).
 Blue line is smoothed change in attack strength. Red is smoothed change in defense strength.



	date	home		away		venue	pred.home	pred.away
25431	2014-03-29	Seattle United NE Blue B02	0	Mercer Island FC Strikers B02	1	NPSL Spr B11D1	3.57	0.89
24536	2014-03-15	Seattle United NE Blue B02	2	Crossfire Select Johnson B02	4	NPSL Spr B11D1	2.99	1.33
23837	2014-03-08	Seattle United NE Blue B02	2	Kent United Green B02	2	NPSL Spr B11D1	2.47	2.68
23387	2014-03-01	Kent United Black B02	1	Seattle United NE Blue B02	8	NPSL Spr B11D1	0.70	7.39
22899	2014-02-22	Mercer Island FC Strikers B02	2	Seattle United NE Blue B02	2	NPSL Spr B11D1	0.89	3.57
21966	2014-02-01	Seattle United S Black B02	6	Seattle United NE Blue B02	1	Founders Cup B02	6.31	1.04
21694	2014-01-25	Seattle United NE Blue B02	3	NSC Barca B02	0	Founders Cup B02	2.47	2.16
21298	2014-01-18	Seattle United NE Blue B02	14	Mukilteo Rush B02	0	Founders Cup B02	6.04	0.82
21063	2014-01-11	Crossfire Select Butler B02	4	Seattle United NE Blue B02	2	Founders Cup B02	3.09	1.47
20892	2014-01-04	Seattle United NE Blue B02	6	Newport FC Supernova B02	1	Founders Cup B02	3.39	1.84
19031	2013-11-23	Seattle United NE Blue B02	3	Mercer Island FC United B02	3	NPSL B11D1	1.37	3.11
18343	2013-11-16	Crossfire Select Butler B02	2	Seattle United NE Blue B02	1	NPSL B11D1	3.09	1.47
17577	2013-11-09	Seattle United NE Blue B02	2	Seattle United S Blue B02	3	NPSL B11D1	1.53	2.23
16566	2013-11-02	Seattle United NE Blue B02	0	Seattle United W Blue B02	2	NPSL B11D1	1.58	2.82
15677	2013-10-26	BIFC Blue B02	2	Seattle United NE Blue B02	5	NPSL B11D1	2.48	2.17
14737	2013-10-19	Seattle United S Black B02	9	Seattle United NE Blue B02	2	NPSL B11D1	6.31	1.04
13688	2013-10-12	Seattle United NE Blue B02	3	Seattle United Shoreline Blue B02	0	NPSL B11D1	3.08	2.96
12647	2013-10-05	Seattle United S Blue B02	1	Seattle United NE Blue B02	4	NPSL B11D1	2.23	1.53
11747	2013-09-28	Mercer Island FC United B02	3	Seattle United NE Blue B02	2	NPSL B11D1	3.11	1.37
10777	2013-09-21	Seattle United NE Blue B02	1	Crossfire Select Butler B02	1	NPSL B11D1	1.47	3.09
9801	2013-09-14	Seattle United NE Blue B02	1	Crossfire Select OMelia B02	4	NPSL B11D1	1.34	3.88
8856	2013-09-07	BYSC Select B02	1	Seattle United NE Blue B02	2	NPSL B11D1	1.13	4.95
6928	2013-08-17	Seattle United NE Blue B02	1	WPFC Fury Black B02	2	Bigfoot Silver U11	3.11	1.41
6723	2013-08-16	ISC Gunners B B02	5	Seattle United NE Blue B02	0	Bigfoot Silver U11	2.69	1.82
6655	2013-08-15	Seattle United W Blue B02	4	Seattle United NE Blue B02	0	Bigfoot Silver U11	2.82	1.58
5642	2013-08-04	Seattle United NE Blue B02	4	Marysville Force B02	1	Marysville Strawberry Classic BU11 Group 2	5.96	0.62
5644	2013-08-04	Seattle United NE Blue B02	6	Seattle United S White B02	2	Marysville Strawberry Classic BU11 Group 2	4.51	1.06
5341	2013-08-03	Seattle United NE Blue B02	10	BIFC White B03	0	Marysville Strawberry Classic BU11 Group 2	11.15	0.19

	date	home		away		venue	pred.home	pred.away
5188	2013-08-02	Seattle United S White B02	1	Seattle United NE Blue B02	3	Marysville Strawberry Classic BU11 Group 2	1.06	4.51